

Concrete Forming Structures



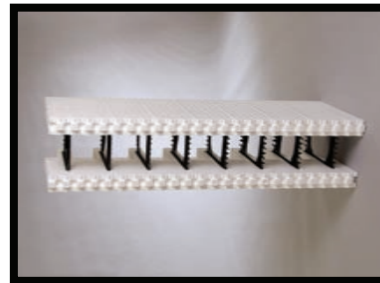
INSULATED CONCRETE FORMS (ICF)

Amvic forms are the most user-friendly of ICF products on the market. The innovative design increases speed of construction, reduces labor costs, and provides the highest level of performance and durability both before, during, and after installation.

The powerful combination of the patented, reversible FormLock interlock, EPS composition innovative web design, and web spacing creates a structural ability to withstand internal vibration, ensuring a superior foundation or wall system design.

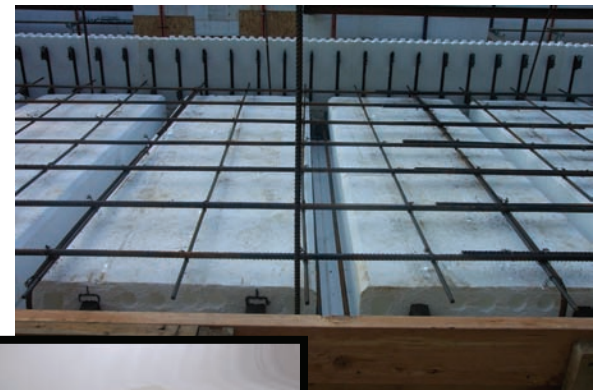
Features/Benefits:

- High performance, R-value of 40-50
- Reduction of 30-50% in energy costs
- Sound transmission containment
- Fire rating, 3+ hours
- Labor savings, less construction time



INSULATED DECK SYSTEM

The AmDeck Floor & Roof System is a modular, lightweight, stay-in-place, form made of Expanded Polystyrene (EPS) used to construct concrete floors and roofs. When installed properly the system provides structural strength through reinforced concrete and insulation through EPS. The System utilizes 10" lightweight steel framing studs which carry the temporary construction loads until the concrete gains its required strength and act as furring strips to which interior finishes can be attached. This system perfectly compliments your Insulated Concrete Form (ICF) structure and together they provide a complete structural and thermal "building envelope".



Concrete Forming Structure



GEOFOAM LIGHT-WEIGHT FILL

Traditional earth materials are heavy and can cause settlement, instability, or lateral pressures. ACH Geof foam is used as concrete void filler for poured-in-place and precast concrete systems to reduce the requirement for material and overall weight. The added energy performance is achieved in a built-in protected, and cost-effective step.

ACH Geof foam can be made in large or small, thick or thin sections. The product can be custom cut in a variety of sizes.

Features/Benefits:

- Extremely light weight, which reduces lateral or bearing loads
- Excellent adhesion to concrete
- Stable insulating value
- Maximizes installation efficiency and cost savings

EPS PERIMETER & UNDERSLAB INSULATION

Polar-R EPS was developed to meet all of these requirements and incorporate high performance EPS insulation with strong film facings, making it a durable underlayment for the application of new sidings. The Polar-R design wraps your home in continuous insulation envelope which reduces air infiltration and offers a lifetime of energy savings.

Below-Grade Insulation EPS is stable and very low moisture gain when used in properly drained designs. Foam Control EPS Insulations retains 95% of its R-Value, even at 5% moisture gain. Foam Control EPS may also be used on the interior of foundation walls as crawl-space insulation.

Features/Benefits:

- Stable R-Value
- Provides solidarity to energy efficiency
- Resistant to termites
- No CFC, HCFC, or HFC

