



EXTRA STRENGTH MORTAR COLOR

Enhances total wall beauty

Easier Color Control

Pre-Weighted and Measured Packaging

Easier To Use

One Small Carton of Color/Bag of Masonry Cement

Easier To Handle

Six Cartons per Case; Enough Color to lay 1,000 to 1,200 bricks. More than 18 Beautiful Colors. SGS mortar colors are formulated to produce pleasing color shades that complement or accentuate the wide range of colors found in brick, stone and colored concrete block. All mortar colors are shipped in proportional packages which have been accurately pre-weighted and measured. Each individual package is designed as one color unit.

Use:

SGS Mortar Colors are pure mineral pigments designed to be used with all cementitious material whether it may be a Type N, S, M or O strength masonry cement or portland and lime mixtures.

Composition and Materials:

SGS colors are each inert, stable to atmospheric conditions, sunfast, weather resistant, alkali resistant, water insoluble, permanent and free of fillers and extenders.

Packaging:

All SGS Concentrated Mortar Colors are packaged in sealed unit bags, ranging from one pound to seven pounds. An "A" Series case contains six color unit bags.


The "H" Series case contains 12 unit bags and the "X" Series contains 18 unit bags. Each

case contains enough color to lay approximately 900 ("A"), 1800 ("H") and 2700 ("X") standard size bricks respectively using a 3/8" mortar joint.



SGS Mortar Color Kit and Catalog available from CARTER-WATERS

DIVISION 4

<h3>PORTLAND CEMENT</h3>  <ul style="list-style-type: none"> • Variety of Applications • Resists Weather • Resists Chemicals <p>ASTM C 150. Classified as Types I, II, III and V</p>	<h3>SAND</h3> <ul style="list-style-type: none"> • Black Beauty • Non silicosis aggregate for overlays & sand blasting • General Purpose sand 	<h3>MASON Slik Lime</h3> <ul style="list-style-type: none"> • Type 2 • 50 lb. Bag • 45 Pallet • Lime Marking Grid
<h3>TYPE N MASONRY CEMENT</h3>		

PVC FLASHING

Moistseal

(Recommended for concealed applications only. Moistseal is a waterproofing membrane.)

Moistseal is a polyvinyl chloride sheet available in 10, 20, 30 and 60 mils. It will show no cracking or flaking when bent through 180 degrees over a 1/32" mandrel and then bent at the same point over the same size mandrel in the opposite direction through 360 degrees. The material conforms to Standards D-822 for at least 400 hours. Strict quality control assures full weight and uniform thickness.

Note: Moistseal, and any other PVC membranes, are not recommended for thru-wall masec by Advanced Building Products, Inc. or the Brick Institute of America.

MIL	Thickness	Roll Size
10	.010	72" x 150'
20	.020	72" x 100' or 60" x 150'
30	.030	72" x 100'
60	.056	48" x 50'



COP-R-KRAFT

A full copper sheet weighing 1, 2 or 3 oz. per square foot bonded to a layer of waterproofed, creped kraft paper with a plasticized asphalt compound. The 3 oz. weight is reinforced with woven glass fabric scrim and meets FHA specifications.

Size: 1, 2 or 3 oz. per square foot.
Rolls 36" wide x 60' long. Will slit to multiple widths.



COP-R-KRAFT DUPLEX

A full copper sheet weighing 1, 2, 3 or 5 oz. per square foot bonded between two layers of waterproofed, creped kraft paper with a plasticized asphalt compound. The 3 and 5 oz. weights are reinforced with a woven glass fabric scrim to meet GSA, FHA and Corps of Engineers specifications. This strong but flexible masonry flashing will give you economical and permanent moisture protection.

Size: 1, 2, 3 or 5 oz. per square foot.
Rolls 36" wide x 60' long. Will slit to multiple widths.



PEEL-N-SEAL (SELF-ADHERING)

Peel-N-Seal is a 40 mil. thick waterproofing membrane consisting of a self-adhering rubberized asphalt laminated to a high density polyethylene film. A special release liner prevents the membrane from sticking to itself in the roll. The heavy polyethylene film is resistant to cuts and tears while providing excellent waterproofing characteristics.

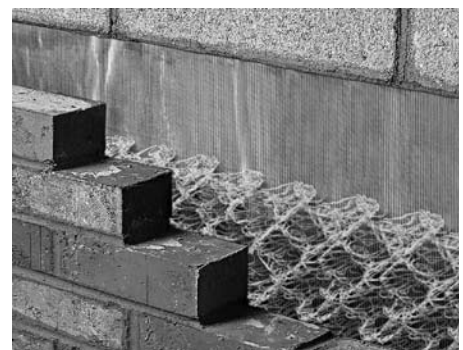
Available in 75' Rolls x 12", 16", 18", 24", 36"



COPPER FABRIC FLASHING

The highest quality laminated copper flashing on the market today. This unique, time-proven flashing is available in 2, 3, 5, or 7 oz. per square foot to meet all your specification needs. Two layers of dense glass fabric and a special blended asphalt are laminated to the copper core to produce greater tensile strength and improved puncture resistance. This composition of copper, glass fabric, and asphalt will ensure a permanent bond in the mortar joint and protection from moisture.

Size: Rolls 36" wide x 25' long. Will slit to multiple widths.



Kansas City, MO
816-471-2570
816-221-9562 (FAX)

Distribution Center
816-231-4433
816-231-3516 (FAX)



Olathe, KS
816-471-2570
913-768-0371 (FAX)

Wichita, KS
316-942-6712
316-942-1414 (FAX)



CONCEALED FLASHINGS

Thru-Wall style provides excellent protection

CCW-705-TWF Self-adhering Thru-Wall Flashing

Typical Use:

CCW-705-TWF Thru-Wall Flashing is designed to provide moisture protection in cavity wall construction. Its self-adhesive nature allows easy installation on concrete, masonry, gypsum, steel and wood substrates.

Advantages:

- CCW-705-TWF Thru-Wall Flashing is compatible with CCW-705 Vapor/Air Barrier Membrane to provide a complete system of wall protection.
- The inherent durability of the 8 mil cross-laminated polyethylene film resists mechanical damage and ensures the integrity of the rubberized asphalt water-proofing membrane during subsequent wall construction.
- CCW-705-TWF provides a waterproof barrier at flashing areas to prevent wall assembly leaks.
- The membrane is fully adhered to the substrate to prevent moisture migration behind the flashing.
- The rubberized asphalt seals around fastener penetrations through the

membrane.

- Detailing is easy to install, inspect and repair.

Vapor & Air Barriers	
CCW-705 Self-Adhering vapor & Air Barrier for Cavity Walls	■ ■
CCW-705-TWF Self-Adhering thru Wall Flashing (Non-Exposed uses)	■ ■
BARRISEAL Liquid-Applied Air/Vapor Barrier for Cavity Walls	■
PRE-KLEENED™ EPDM Pre-Washed EPDM Thru Wall Flashing (UV & OZONE Resistant)	■
WINDOW & DOOR FLASHING Self-Adhering Flashing	■ ■

DIVISION 4



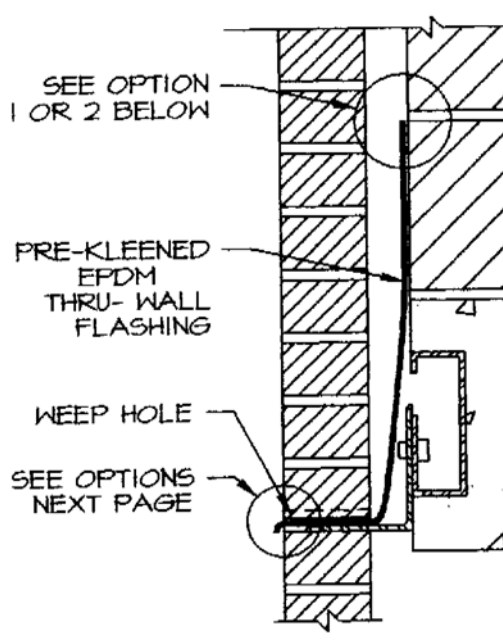
PRE-KLEENED™ EPDM

Thru-Wall Flashing – pre-wash

Advantages:

- UV and ozone resistant; products can be left exposed during normal construction delays and the product can be an exposed building component.
- Product will not stain brickwork in high temperature applications.
- Seaming is easily accomplished.
- Resistant to tears and punctures.
- No installation temperature restrictions.
- 500% elongation; product easily handles expansion and contraction of building components.
- Easy to detail around corners and angle changes.

Technical Data		
Property	ASTM Test	Typical
Thickness, Inches	D 412	040±10%
Tensile Strength	D 412	1600psi
Elongation	D 412	500%
Tear Resistance	D 624	200lb/in
Brittleness Temp	D 746	-65°C
Resistance to water Absorption -% change in mass after 7 days @ 158°F	D 741	2
Water Vapor Permeance	E 96	.06 perms
Resistance to UV	G 4637	No cracks
Ozone Resistance	D 1149	No cracks



Packaging

- 12" x 100' (100 sq. ft.), 2 rolls per carton
- 18" x 100' (150 sq. ft.), 1 roll per carton
- 24" x 100' (200 sq. ft.), 1 roll per carton
- 36" x 100' (300 sq. ft.), 1 roll per carton



WINDOW & DOOR FLASHING

DESCRIPTION

Carlisle's Window & Door Flashing is a 40 mil composite consisting of a 36 mil self-adhering rubberized asphalt membrane laminated to a 4 mil high-density polyethylene film and a removable release sheet. The flashing is designed to provide a barrier to moisture and air infiltration around Window & Door flanges and through joints and cracks in exterior wall assemblies. It is also useful for other above grade wall flashing applications.

Window & Door Flashing is cold applied and when pressed against the substrate will adhere firmly. Its self-adhering nature allows easy installation on concrete, block, aluminum, steel, exterior gypsum sheathing or wood. The flashing is installed in a shingle method, so splices will shed water.

ADVANTAGES

- Resists mechanical damage
- Provides a seal around fasteners and penetrations to prevent wall assembly leaks
- Self-adhering
- Compatible with CCW-705 Vapor/Air Barrier Membrane to provide a complete system of wall protection
- Easy to install, inspect, and repair

PACKAGING

4" wide X 100' (33.3 sq ft), 6 rolls/carton, 32 cartons/pallet
 6" wide X 100' (50 sq ft), 4 rolls/carton, 32 cartons/pallet
 9" wide X 100' (75 sq ft), 2 rolls/carton, 48 cartons per pallet

12' wide X 100' (100 sq ft), 2 rolls/carton, 32 cartons/pallet

CCW-702 Solvent-Based Primer 5 gallon pails (45 pails per pallet)

CCW-AWP Water-Based Primer 5 gallon containers (36 containers per pallet) 1 gallon containers (180 [45 (4-1)] containers per pallet)

CCW-714 Water-Based Primer 5 gallon pails (45 pails per pallet) 1 gallon pails (100 pails per pallet)

CCW-704 Mastic 30 oz. Qt. Cartridge (12 ctg. per case) 5 gallon pails (45 pails per pallet)

TECHNICAL DATA

PROPERTY	TEST METHOD	RESULTS
Thickness		40 mils
Tensile	ASTM D 412 (C)	500 psi
Elongation*	ASTM D 412 (C)	300%
Permeance	ASTM E 96 (B)	.05 perms
Pliability	ASTM D 146	Passes @ -25°F 0.063" mandrel
Peel Strength	ASTM D 903	7.5 lb./in. width
Puncture Resistance	ASTM E 154	40 lbs. (min.)
Lap Adhesion	D1876 Mod.	7.0 lb/in width
H ₂ O Absorption	ASTM D 570	0.12% by wt.

*% of elongation to ultimate failure of rubberized asphalt membrane



CCW-705

Self-Adhering Vapor/Air Barrier System

TYPICAL USE

The system is designed to provide a complete barrier to moisture or air when adhered to an above grade substrate. It is also useful for other above grade wall flashing applications. The CCW-705 Vapor/Air Barrier System is cold applied and when pressed against the substrate will adhere firmly. The application may be done horizontally or vertically over the full surface area. Its self-adhering nature allows easy installation on concrete, masonry, gypsum, steel and wood substrates.

ADVANTAGES

- Resists mechanical damage.
- Provides a seal around fasteners and other penetrations to prevent wall assembly leaks.
- Self-adhering.
- Compatible with CCW Window and Door Flashing to provide a complete system of wall protection.
- Easy to install, inspect and repair.

PACKAGING

CCW-705-36 - 36" wide X 75' roll (225 ft²/rl) 1 roll per box, 35 boxes per pallet Weight = 60 lb/box (approx); 2200 lb/pallet

CCW-705-24 - 24" wide X 100' roll (200 ft²/rl) 1 roll per box, 32 boxes per pallet Weight = 54 lb/box (approx); 1800 lb/pallet

CCW-705-18 - 18" wide X 100' roll (150 ft²/rl) 1 roll per box, 48 boxes per pallet Weight = 40 lb/box (approx); 2000 lb/pallet

Note: For narrower tape widths, use CCW Window and Door Flashing.

CCW-702 Solvent-Based Primer 5 gallon pails (45 pails per pallet)

CCW-AWP Water-Based Primer 5 gallon containers (60 containers per pallet) 1 gallon containers (252 containers per pallet)

CCW-714 Water-Based Primer 5 gallon pails (45 pails per pallet) 1 gallon pails (100 pails per pallet)

CCW-704 Mastic 30 oz. Qt. Cartridge (12 ctg. per case), 5 gallon pails (45 pails per pallet)

TECHNICAL DATA

PROPERTY	TEST METHOD	RESULTS
Thickness	—	40 mils
Tensile Strength	ASTM D 412 (C)	500 psi
Elongation*	ASTM D412 (C)	300%
Permeance	ASTM E 96 (B)	.05 perms
Pliability	ASTM D 146	Passes @ -25°F 0.063" mandrel
Peel Strength	ASTM D 903	7.5 lb./in. width
Puncture Resistance	ASTM E 154	50 lbs. (min.)
Lap Adhesion	D1876 Mod.	7.0 lb/in width
H ₂ O Absorption	ASTM D 570	0.12% by wt.
Air Infiltration	ASTM E 283	Pass
Water Penetration	ASTM E 331	Pass

*% of elongation to ultimate failure of rubberized asphalt membrane

Kansas City, MO

816-471-2570

816-221-9562 (FAX)

Distribution Center

816-231-4433

816-231-3516 (FAX)



Olathe, KS

816-471-2570

913-768-0371 (FAX)

Wichita, KS

316-942-6712

316-942-1414 (FAX)

MORTAR NET™

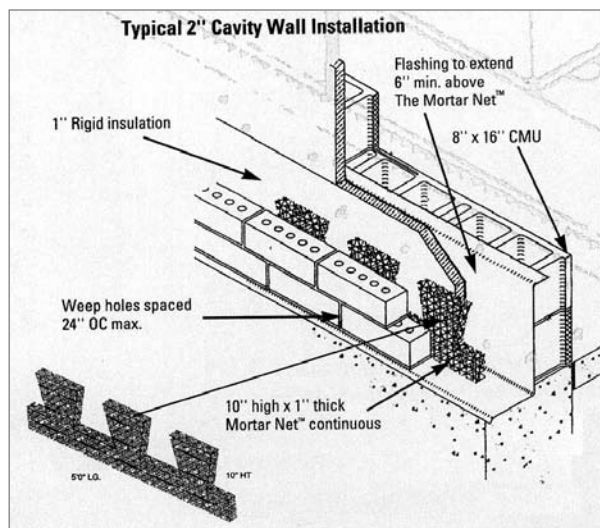
Assures correct moisture migration

How the MORTAR NET™ Works

The Mortar Net™ is placed on top of the flashing inside the cavity where it catches, and permanently suspends mortar droppings above the level of the weep holes and flashing. Its dovetail shape prevents mortar from forming a continuous dam, and its shape, in combination with its 90% open mesh configuration, allow water and air to rapidly and easily move through the material to the weeps.

Absolutely eliminates weep hole blockage from mortar droppings

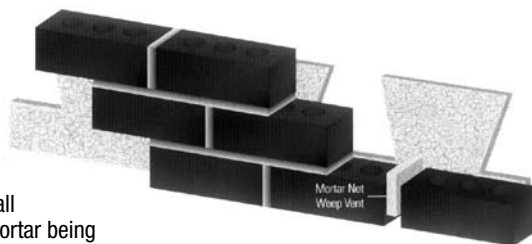
- Keeps weep holes open—catches and permanently suspends mortar droppings above the level of the flashing and weeps, so blockage of weeps can't occur.
- Prevents mortar damming—unique patented dovetail shape breaks up mortar droppings so water always has open flow paths to weeps.
- 90% open plastic mesh construction allows unobstructed passage of air and water through the material itself so walls breathe, drain and dry more quickly.
- Fast, easy installation by masons—requires no fasteners or adhesives, no special skills or tools.
- 5'-0" (1524 mm) long sections in four nominal sizes: 10" (254 mm) high by 1" (25.4), 0.8" (20.32 mm), and 0.4" (10.16 mm) thicknesses, and 16" (406.4 mm) high by 1" (25.4 mm) thick.



Maximize the beauty of masonry walls

Mortar Net Weep Vents are the new, easy way to ensure cavity construction masonry walls maintain their finished appearance and drain correctly.

This is the industry's most economical and effective solution. They are easy and quick to install and available in a choice of colors to match the mortar being used. This eliminates open holes and dark shadows.



MORTAR MAZE®

Allows moisture to seep down and weep out of the wall

For use at all flashing locations, such as single wythe and veneer applications.

The moulded polymer core geomatrix design allows moisture to seep down through any mortar droppings and weep out of the wall through mortar-free weep holes.

Mortar Maze, used with properly installed flashing and weep holes along with good mortar applying techniques, will ensure the performance of a well designed masonry wall.

Composition:

Mortar Maze is a polymer core geomatrix composed of nylon strands woven and molded into a 1" or 2" thick maze design. The special maze spacing allows mortar to be suspended preventing a continuous barrier trap of mortar droppings or moisture from forming to clog weep holes.

